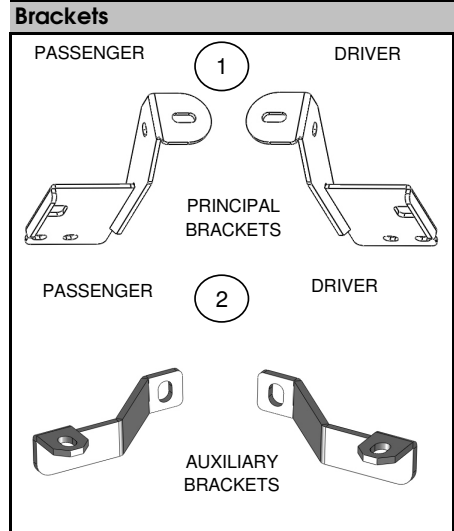
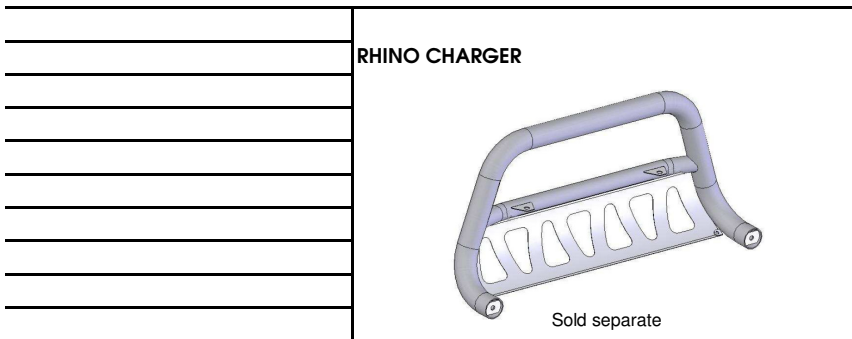


Parts List				
Item	Qty.	Code	Description	Max. Torque
	1	BRK-522875	Brackets Kit	
1	1		Set of Main Brackets	
2	2		Set of Auxiliary Brackets	
	1	KTE-522875	Hardware kit	
3	2		1/2" x 2" Hex Bolt	30 Lb. Ft
4	6		Flat washer 1/2"	
5	4		Lock washer 1/2"	
6	2		1/2" Hex nut	30 Lb. Ft
7	2		1/2" x 1 1/4" Hex bolt	30 Lb. Ft

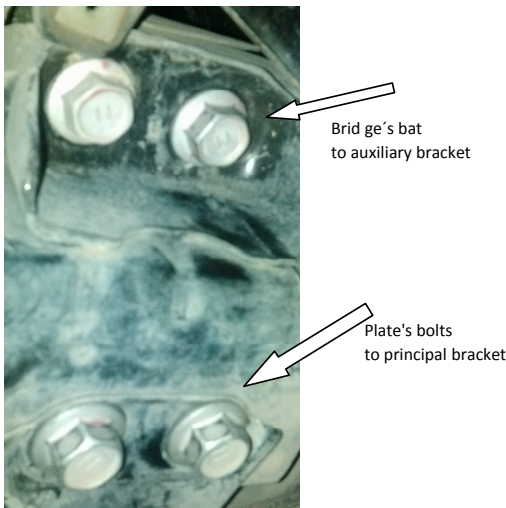
Required Tools (Not included)	
Qty.	Description
1	18mm Socket/wrench
1	3/4" Socket/wrench
1	Ratchet extension
1	Ratchet
1	Cutter



Instructions

1. Before beginning the installation, please read all directions carefully and verify that all necessary hardware is accounted for. If any parts are missing, stop the installation and contact your distributor immediately.
2. To maintain and care this product, keep it clean and do not use abrasive cleaners or polish waxes. We recommend to use only non-abrasive automotive wax such as pure carnauba to avoid scratches and rust.
3. The approximate installation time is **30 min.**
4. Remove the hopper from below the vehicle, identify (4) original bolts; (2) at the vehicle's plate & (2) at the bridge. Remove the plate's bolts and (1) from the right side of the bridge.
5. The auxiliary bracket in the same place you removed the original bolt and join the bracket with this bolt. After that, place the Main bracket at the vehicle's plate and attach the (2) original bolts. Leave the bolts loose for final adjustment. Picture 2

PICTURE 1



PICTURE 2



INSTALLATION INSTRUCTIONS

6. Use (1) 1/2" x 1 1/4" Hex head bolt, (2) 1/2" flat washers, (1) 1/2" lock washer and (1) 1/2" hex nut to install the auxiliary bracket with the principal bracket. Picture 3. Repeat the above steps to install the opposite side.

PICTURE 3



7. To attach the Bull Bar to the mounting brackets use (2) 1/2" x 2" hex head bolts, (1) 1/2" flat washer, (1) 1/2" lock washer for each side. Leave the bolt loose for final adjustment. Picture 4 & 5.

PICTURE 4



PICTURE 5



PRODUCT INSTALLED

8. Align the Bull Bar with the front of vehicle and tighten all nuts and bolts.
9. Fill out the warranty card and place it inside your vehicle's glove box.

NOTE: If you need to install the hopper again, cut the brackets area to install it again in the original position.